

THIS IS BOTKYRKA

OUR VISION

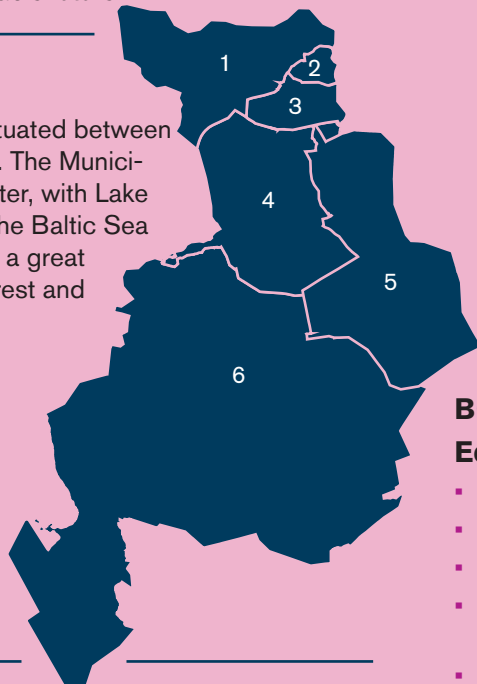
The Botkyrka of the future is an inspiring place with great potential. With our contrasts, creativity and curiosity we are creating the best possible prerequisites for a sustainable future.

GEOGRAPHY

Botkyrka Municipality is situated between Stockholm and Södertälje. The Municipality is surrounded by water, with Lake Mälaren to the north and the Baltic Sea to the south. Botkyrka has a great many areas of natural interest and several nature reserves.

Municipal districts

- 1 Hallunda - Norsborg
- 2 Fittja
- 3 Alby
- 4 Tumba
- 5 Tullinge
- 6 Tumba - Grödinge



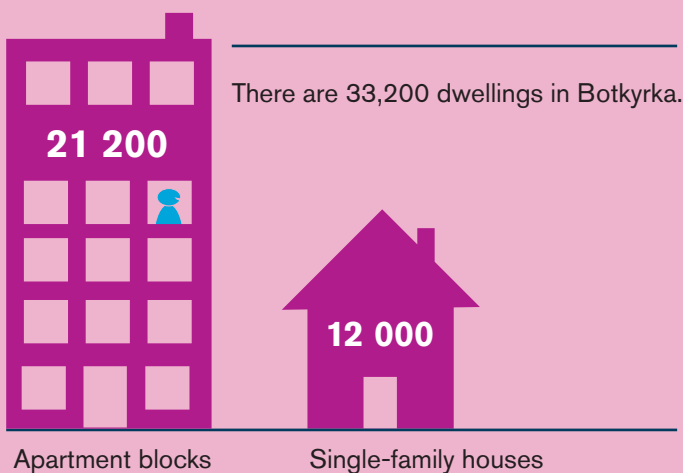
INDUSTRY AND COMMERCE

There are 5,000 workplaces sites and 23,800 job opportunities (including the public sector, 2014). Around 90 per cent are small and medium-sized workplaces.

Around 12,000 of the 39,500 gainfully employed inhabitants work near their homes. 5.1% are unemployed (November 2015), compared to the national average of 7.5%.

Botkyrka Municipality is the major employer, with 5,572 employees on monthly salaries.

HOUSING



We speak around
100
languages in Botkyrka

**FAR FROM
AVERAGE**

Botkyrka is
cooperating with a great
many organizations
world-wide

BOTKYRKA OFFERS

Education

- 1 field bus with a nature school
- 1 Adult Education centre
- 1 Vocational University
- 2 independent senior secondary schools
- 3 municipal senior secondary schools
- 6 independent schools
- 11 independent pre-schools
- 12 private educational care centres
- 22 municipal elementary schools
- 50 municipal pre-schools

Nursing care

- 4 temporary homes for children and young people with functional impairments
- 5 daily activity centres for the elderly
- 9 retirement homes
- 10 daily activity centres for people with functional impairments
- 25 homes with special services for people with functional impairments

Miscellaneous

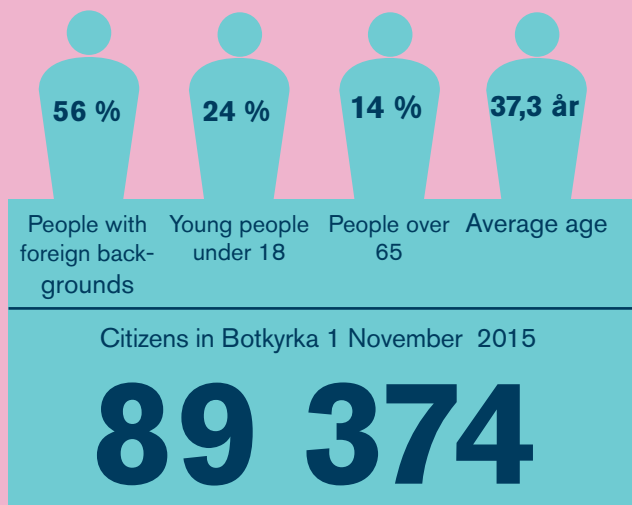
- 5 civic offices

Culture and leisure

- 1 school of the arts
- 1 art gallery
- 1 public health park
- 2 public baths
- 2 meeting places for young adults
- 2 meeting places for Botkyrka's over 60's
- 3 indoor ice rinks
- 4 sports grounds
- 5 outdoor swimming pools
- 6 illuminated ski tracks
- 6 libraries
- 8 leisure centres
- 10 playing areas with artificial grass
- 10 leisure clubs
- 12 sports centres
- 14 nature reserves
- 26 parks
- 51 children's play parks
- 389 associations
- 13 playing areas with artificial grass

**BOTKYRKA
MUNICIPALITY**





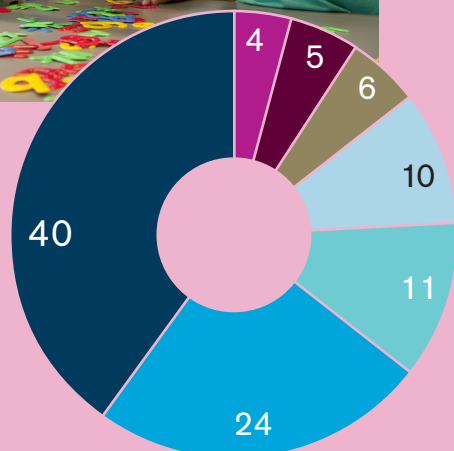
CIVIC OFFICES

There are civic offices in Alby, Fittja, Hallunda, Tullinge and Tumba. The Citizens' service is located in Vårsta library. These offices dealt with 63,000 issues in 2014.



BUDGET in percentages

Allocation of the common pool consisting of tax money and state subsidies in 2016:



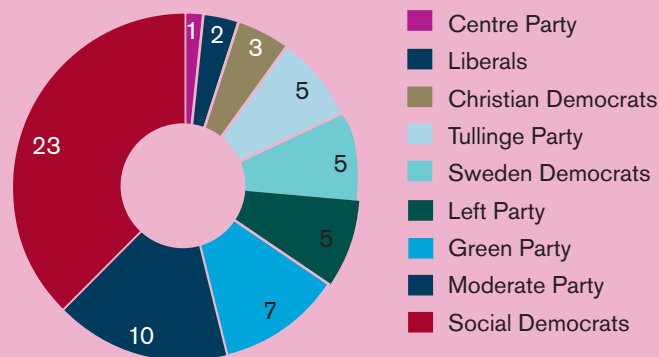
THE MUNICIPAL TAX RATE FOR 2016 IS 20.15%

Pre-schools and schools	SEK 1911 M
Nursing and care of the elderly and people with functional impairments	SEK 1160 M
Individual and family care	SEK 532 M
Senior secondary schools and adult education	SEK 460 M
Culture and leisure	SEK 263 M
Common/joint	SEK 190 M
Infrastructure, emergency services, etc.	SEK 233 M

Botkyrka Municipality, Munkhättevägen 45, SE-147 85 Tumba, Sweden
Telephone: +46-(0)8-530 610 00, www.botkyrka.se

GOVERNANCE AND DISTRIBUTION OF SEATS

The Social Democrats, the Left Party and the Green Party have a political majority in the Municipality.



ADVICE, SUPPORT AND SERVICES

- Municipal guidance
- Consumer advice
- Energy advice
- Budget and debt advice
- Guidance centre for adult education
- Botkyrka Job Centre
- Support for relatives
- Reception for violence in close relationships
- Youth reception
- Contact reception – support for children and network for teenagers
- Special assistance for people with disabilities
- Mini Maria - reception for young people concerning alcohol, drugs and gambling
- Addiction advice – concerning alcohol, drugs and gambling
- Parents' meetings – concerning parenthood today
- 5 open pre-schools
- Group meetings for children with separated parents
- Family and parental support
- Home help service
- Botkyrka "fixers" – free practical help for the elderly
- Eyesight and hearing instructor – free advice on aids.

BOTKYRKA

FAR FROM AVERAGE

Our motto means that Botkyrka is a creative meeting place, rich in contrasts. There are many contrasts in Botkyrka- in the architecture, the countryside, in people and in companies. In Botkyrka, we are creative and innovative and we focus on experiences. In Botkyrka, there are unexpected and interested meetings between people, cultures, languages and religions.

