

THIS IS BOTKYRKA

WE SPEAK AROUND
100 LANGUAGES
IN BOTKYRKA



OUR VISION

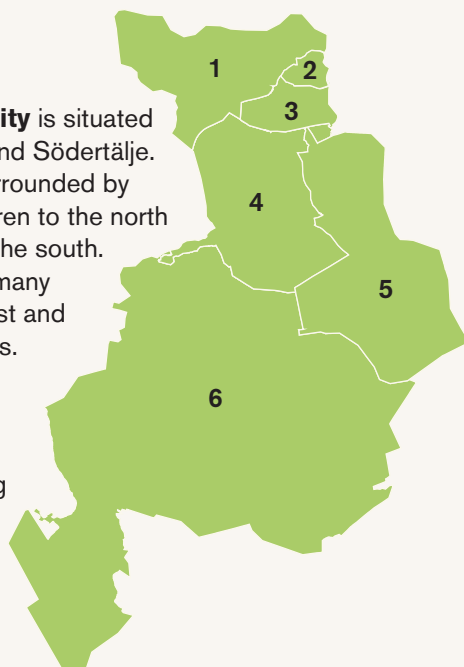
The **Botkyrka** of the future is an inspiring place, full of possibilities. With contrasts, creativity and curiosity, we are creating the best possible conditions for a sustainable future.

GEOGRAPHY

Botkyrka Municipality is situated between Stockholm and Södertälje. The Municipality is surrounded by water, with Lake Mälaren to the north and the Baltic sea to the south. Botkyrka has a great many areas of natural interest and several nature reserves.

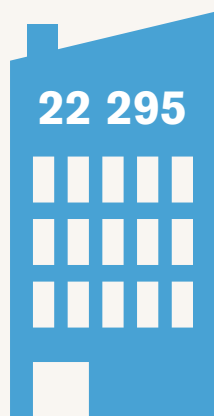
Municipal districts

1. Hallunda–Norsborg
2. Fittja
3. Alby
4. Tumba
5. Tullinge
6. Vårsta–Grödinge

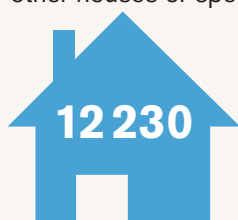


INDUSTRY AND COMMERCE

There are about 26 043 job opportunities (including the public sector, 2019). Of the 44 940 people employed in the municipality, about 12 671 have a job in their home area. The unemployment rate is 6,9% (2019) compared to 4,2% nationally. The Municipality of Botkyrka is the largest employer, with 6 337 employees on monthly salaries.



Apartements



single-family house

There are 36 367 residences in Botkyrka, of which 22 295 are in apartment buildings, 12 230 in single- family houses and 1700 in other houses or special residences.

Psst!

BOTKYRKA OFFERS:

Education

- 1 field bus with a nature school
- 1 adult education centre
- 1 vocational college
- 2 independent upper secondary schools
- 4 municipal upper secondary schools
- 6 independent schools
- 4 open preschools
- 44 municipal preschools
- 12 independent preschools
- 13 private educational care centres
- 22 municipal comprehensive schools

Healthcare

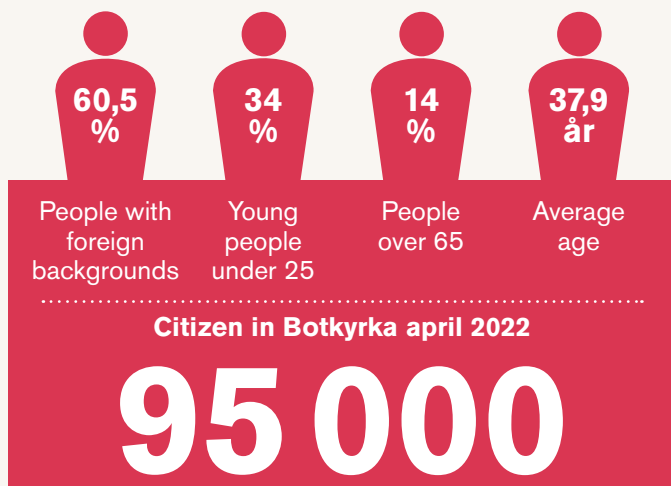
- 2 temporary homes for children and young people with functional impairments
- 6 daily activity centres for the elderly
- 7 residential care homes for the elderly
- 1 service house for the elderly
- 10 daily activities for people with physical impairments
- 28 accommodation for people with physical impairment, of which 4 are service accommodation according to LSS (Swedish Act concerning Support and Service for Persons with Certain Functional Impairments)
- 1 restaurant at the care and nursing home Tornet
- Home help
- Personal assistance
- Supported living for people with disabilities

Culture and leisure

- 1 school of the arts
- 1 art gallery
- 1 public health park
- 1 cinema
- 1 circus school
- 2 public baths
- 1 meeting places for all ages
- 3 People's houses
- 3 meeting places for Botkyrka's over 60's
- 3 indoor ice rinks
- 4 sports fields
- 5 outdoor swimming areas
- 14 artificial grass fields
- 6 illuminated ski/ running tracks
- 6 libraries
- 8 recreation centres
- 12 leisure clubs
- 11 sports centres
- 1 racket hall
- 2 outdoor ice rinks
- 1 mini rugby stadium
- 13 outdoor gyms
- 14 nature reserves
- 2 stormwater parks
- 12 stormwater ponds
- 32 parks
- 65 playgrounds
- 397 associations

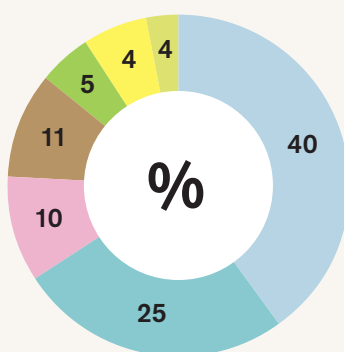
Botkyrka works together with a large number of organisations worldwide.





CIVIC CENTERS

During 2021 civic centres handled some 125 000 cases from citizen via telephone, e-mail, social media and personal meetings. Of these approximately 82 000 were incoming telephone calls and some 14 500 persons were served at personal meetings. There are citizen's offices in Alby, Fittja, Hallunda, Tullinge and Tumba. There is a community support service available at the library in Vårsta.



This is how the costs are allocated between our operations.

The tax rate for 2022 is 32,48% varav 20,15% är kommunal skatt

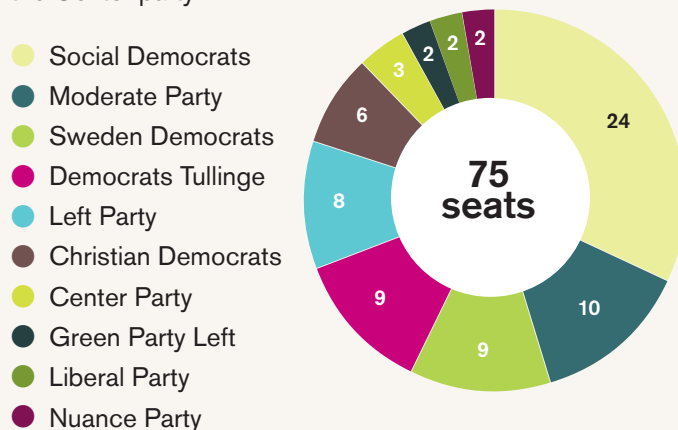
Pre-schools and schools	2 234 mnkr
Nursing and care of the elderly and functionally impaired	1 422 mnkr
Individual and family care	557 mnkr
Upper secondary school- and adult education	587 mnkr
Culture and leisure	302 mnkr
Political leadership and centralised municipal administration	248 mnkr
Infrastructure, emergency, services, etc.	206 mnkr

Botkyrka Municipality

Munkhättvägen 45 • SE-147 85 • Tumba, Sverige
Telephone: 08-530 610 00 • www.botkyrka.se

GOVERNMENT AND SEAT DISTRIBUTION BY %

The Municipality is governed by the Social Democrats, the Christian Democrats, the Green Party, the Liberals and the Center party.



ADVICE, SUPPORT AND SERVICES

- ➔ Municipal guidance
- ➔ Consumer advice
- ➔ Energy advice
- ➔ Budget and debt advice
- ➔ Guidance centre for adult education
- ➔ Botkyrka Job Centre
- ➔ Support for relatives
- ➔ Reception for violence in close relationships
- ➔ Youth reception
- ➔ Contact reception — support for children and network for teenagers
- ➔ MiniMaria — reception for young people concerning alcohol, drugs and gambling
- ➔ Addiction advice — concerning alcohol, drugs and gambling
- ➔ Parents' meetings — concerning parenthood
- ➔ Children's ombudsman
- ➔ 2 family centers
- ➔ Family and parental support
- ➔ Botkyrka fixer will help of no charge for you who are older or have a physical impairment
- ➔ Support center for young victims of crime

Our motto means that Botkyrka is a creative and contrast-rich meeting place. There are many contrasts in Botkyrka, we are creative and innovative and we focus on experiences. In Botkyrka, there are unexpected and interesting meetings between people, cultures, languages and religions.

